



International Student Services

INTERNATIONAL DIVISION

UNIVERSITY OF WISCONSIN-MADISON



INTERNATIONAL STUDENT GUIDEBOOK

CREATED BY INTERNATIONAL STUDENTS LIKE YOU



TABLE OF CONTENTS

01

STUDENT SERVICES

- Office of Student Assistance and Support (OSAS) formerly the Dean of Students Office
- Associated Students of Madison
- University Housing.
- Campus Area Housing.
- International Student Services Advising.
- International Student Services Programming.
- Terra Dotta System
- Travel Documents

02

ACADEMIC RESOURCES

- Full-Time Enrollment
- Reduce Course Load
- Program Extension
- Academic Advising.
- Career Services
- Peer Tutoring Services
- The Writing Center
- WiSH Scholarships

03

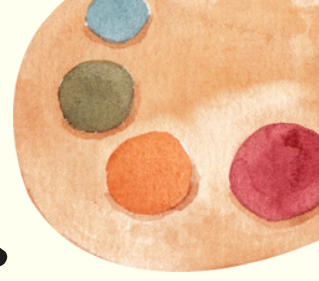
HEALTH RESOURCES

- University Health Services
- Mental Health Services
- Student Health Insurance Plan

04

ADDITIONAL RESOURCES

- DoIT Technology Support
- Multicultural Student Center
- McBurney Disability Resource Center
- Gender & Sexuality Campus Center
- RecWell - Fitness/Gym Resources
- UW - Police Department



STUDENT SERVICES

OFFICE OF STUDENT ASSISTANCE AND SUPPORT (OSAS)

osas.wisc.edu

The Office of Student Assistance and Support (OSAS), formerly known as the Dean of Students Office, is a primary resource for connecting students who are navigating personal, academic, or health issues, to supportive campus and community resources. The Dean of Students Office also serves as a central location for reporting issues of hate and bias, sexual assault, and hazing.

ASSOCIATED STUDENTS OF MADISON (ASM)

asm.wisc.edu

The Associated Students of Madison (ASM) is first and foremost a grassroots organization that works to directly involve and empower all students in making their own lives better by participating in strategic campaigns. The roles of ASM can be divided into three categories: direct action, governance, and service.





STUDENT HOUSING

UNIVERSITY HOUSING

housing.wisc.edu

The University Housing is a resource for undergraduate, graduate students, and their families to find **on-campus** housing.

Phone: 608-262-2522

Email: info@housing.wisc.edu

CAMPUS AREA HOUSING

campusareahousing.wisc.edu

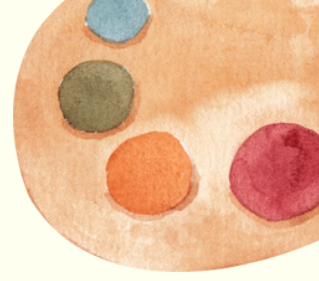
The Campus Area Housing is a resource for people in UW-Madison to find **off-campus** housing near UW-Madison.

Phone: (608)263-2452

Email: campusareahousing@uwmad.wisc.edu



International
Student
Orientation



INTERNATIONAL STUDENT SERVICES (ISS)

Immigration Documentation Inquiry & Programming

ADVISING

iss.wisc.edu

ISS advisors can help with:

- Immigration advising for F-1 and J-1 students
- Document services for F-1 and J-1 students
- Adjustment support and navigating campus services

Your ISS Peer Advisor will...

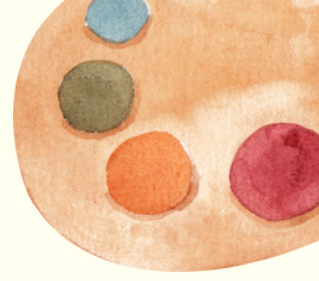
- Support your ISS advisor to review immigration document update requests and respond to Terra Dotta Information Requests
- Provide services at the ISS office desk and answer the ISS phone
- Manage drop-in advising and appointment details, immigration update request assignments, and student document pick-up/mailing

Phone: 608-262-2044

Email: iss@iss.wisc.edu



International
Student
Orientation



INTERNATIONAL STUDENT SERVICES (ISS)

Immigration Documentation Inquiry & Programming

PROGRAMMING

iss.wisc.edu/get-involved/

Global Engagement Team plans, coordinates, and assesses all ISS engagement events and co-curricular activities, for enrolled international students. For more information on how to get involved with ISS Programs and events, explore our Get Involved page!

Email: issprograms@iss.wisc.edu

TERRA DOTTA SYSTEM

iss.wisc.edu/terra-dotta/

Terra Dotta is an online solution to enhance the experience of UW-Madison's international students, scholars, and employees. It will connect with UW-Madison's Student Information System (SIS) and the U.S. Department of Homeland Security (DHS) Student & Exchange Visitor Information System (SEVIS) for F-1 and J-1 visas.

Phone: 608-262-2044

Email: iss@iss.wisc.edu



International
Student
Orientation



IMPORTANT LINKS FOR TRAVEL DOCUMENTATION

TRAVEL

I-94 is proof that you arrived in the U.S. under the correct status for your program. This includes your program visa, such as F-1 or J-1, and your duration of status.

You can access your [I94](#) and update your [I94 Record](#)

Travel and (RE)entry guidance is important to our international student community. Please be aware of our travel guidance during this time.

Information can be found here: [Travel](#) and [Travel Signature](#)

PASSPORT

Keep your passport information **up to date**

- [key biographical changes that could warrant updating one's passport](#)

You can find more information on how to **replace** your documents on [Renew/Replace Your Documents](#).



International
Student
Orientation



ACADEMIC RESOURCES



FULLTIME ENROLLMENT

iss.wisc.edu/full-time-enrollment/

F-1 and J-1 student visa holders are required by U.S. federal regulations to enroll full-time on the campus which issued their I-20 or is the campus site on their DS-2019.



REDUCED COURSE LOAD

iss.wisc.edu/students/current-students/reduced-course-load/

A Reduced Course Load (RCL) allows an F-1 or J-1 student to legally remain in the U.S. while enrolled less than full-time. Here are some cases in which a student may wish to request a Reduced Course Load (RCL).

- Academic difficulties
- Medical conditions
- It is your final semester of study
- Ph.D. or Master's students who have completed their course work

For each semester that you would like to request an RCL, you must first submit a request in **Terra Dotta** and be authorized by ISS **before** you drop below full-time enrollment.



PROGRAM EXTENSION

iss.wisc.edu/students/current-students/extend-your-study/

Program Extension requests are submitted in Terra Dotta, and require your academic advisor faculty advisor, or graduate program coordinator to verify your academic progress and the reason for the extension.



ACADEMIC RESOURCES



ACADEMIC ADVISING

Please reach out to your academic department to talk about your academic record and performance. To talk more about your career development and opportunities, contact your academic department for resources on or across campus.



CAREER SERVICES

careers.wisc.edu

To talk more about your career development and opportunities, contact your academic department for resources on or across campus.

Find your department's career services at [Career Services](#) at UW - Madison



PEER TUTORING SERVICES

guts.wisc.edu

The [Greater University Tutoring Service \(GUTS\)](#) is a free and student-run tutoring service that provides academic, language, and study skill support services taught and facilitated by students, for all UW - Madison students.

Phone: (608) 263-5666

Email: gutsstudentorg@gmail.com



ACADEMIC RESOURCES



THE WRITING CENTER

writing.wisc.edu

The Writing Center supports students working on all kinds of writing projects. Learn more about our appointments, workshops, writing mentorships, and writing groups.

Phone: 608-263-1992

Email: wcenter@writing.wisc.edu



WISCONSIN SCHOLARSHIP HUB (WISH)

wisc.academicworks.com

WiSH provides a listing of scholarship opportunities available to students with information about the applications, deadlines, eligibility criteria, award amounts, donors, and more.

Email: scholarships@finaid.wisc.edu





HEALTH RESOURCES



UNIVERSITY HEALTH SERVICES (UHS)

University Health Services (UHS) is the health clinic on campus, open to any current UW-Madison student. The team of experienced professionals combines routine health care with specialty clinics that focus on key health concerns.



uhs.wisc.edu

Phone: (608)265-5600

LOCATIONS

Main UHS Clinic – 333 East Campus Mall

- **5th floor:** Medical Services (Primary Care)
- **6th floor:** Medical Services (Allergy, Immunotherapy, Sexual Health, Gynecology), Psychiatry
- **7th floor:** Mental Health Services, Student Health Insurance Plan (SHIP)
- **8th floor:** Survivor Services, Health Information Management (HIM)

Lakeshore Clinic – Dejope Hall (*drop-in only*) – Closed during the summer term

- **Room 1104:** Minor illness and injury treatment



International
Student
Orientation



HEALTH RESOURCES



MENTAL HEALTH SERVICES (MHS)

Mental Health Services (MHS) provides an understanding of the complexities of student life and offer an open, safe, and confidential environment to help students through issues that may interfere with their development, well-being, and academic productivity.



uhs.wisc.edu/mental-health/

24/7 Crisis Support:
(608)265-5600

SERVICES PROVIDED

UHS's no-cost mental health services include:

- Individual counseling.
- Couple/partner counseling.
- Group counseling.
- Outreach programming
- Stress management
- Let's Talk
- 24/7 crisis services

**BILINGUAL SERVICES
ARE PROVIDED FOR
COUNSELING
OPTIONS**



**International
Student
Orientation**



HEALTH RESOUCRES



STUDENT HEALTH INSURANCE PLAN (SHIP)

The Student Health Insurance Plan (SHIP) provides comprehensive health coverage for UW–Madison students and scholars.

International Students are **required** to enroll in SHIP unless they have other insurance waivers.



Phone: (608)265-5232

Email: shipmail@uhs.wisc.edu

LOCATION

SHIP Office

333 East Campus Mall, 7th
floor
Madison, WI 53715

For more information on benefits, premiums, and coverage please visit **the SHIP webpage dedicated to international students.**

Please refer to the **SHIP website** for updated information on **compliance deadlines.**



International
Student
Orientation

ADDITIONAL RESOURCES



DIVISION OF INFORMATION TECHNOLOGY (DOIT)

it.wisc.edu

DoIT offers students the following services: 1) Advice on software or hardware; 2) A network connection; 3) Repair and installation; 4) Software training for students; 5) Sales advice and great prices; 6) Tech help is free.

Phone: 608-264-4357

Email: help@doit.wisc.edu



MULTICULTURAL STUDENT CENTER

The Multicultural Student Center seeks to collaboratively strengthen and sustain an inclusive campus where all students, particularly students of color and other historically underserved students, can realize an authentic Wisconsin Experience.

msc.wisc.edu

Phone: 608-263-2741

Email: msc@studentaffairs.wisc.edu

ADDITIONAL RESOURCES

MCBURNEY DISABILITY RESOURCE CENTER

The McBurney Center provides academic accommodations such as adaptive/assistive technology access, assistive listening devices, document conversion, elevator keys, ASL interpreting, note-taking support, testing accommodations, and reduced credit load recommendations to name a few.

mcburney.wisc.edu

Phone: 608-263-2741

Email: mcburney@studentlife.wisc.edu



GENDER AND SEXUALITY CAMPUS CENTER

lgbt.wisc.edu

The Gender and Sexuality Campus Center: Supporting LGBTQ+ students and their communities is a unit of UW-Madison Student Affairs.

Phone: 608-265-3344

Email: lgbtq@studentaffairs.wisc.edu



ADDITIONAL RESOURCES



RECWELL - FITNESS/GYM RESOURCES

recwell.wisc.edu

Phone: (608) 262-8244

Email: hello@recwell.wisc.edu



UW POLICE DEPARTMENT (UWPD)

uwpd.wisc.edu

Non-emergency phone number: 608-262-9768

Email: uwpolice@mhub.uwpd.wisc.edu



International Student Services
INTERNATIONAL DIVISION
UNIVERSITY OF WISCONSIN-MADISON

